

A THANK YOU
TO OUR SPONSORS & SUPPORTERS
AN INVITATION
TO ALL TO KNOW THE WORKS OF ONE



ONE RECOVERY

WHERE THE CONNECTION IS HUMAN™
1RECOVERY.COM

WHERE THE CONNECTION IS HUMAN

ONE is a 501(c)3 organization dedicated to the inspiration of young people, their loved ones and conscious members of the community. ONE celebrates young people and their unique footprint in this world regardless of their orientation, sex, gender-identity, race, creed, or color.

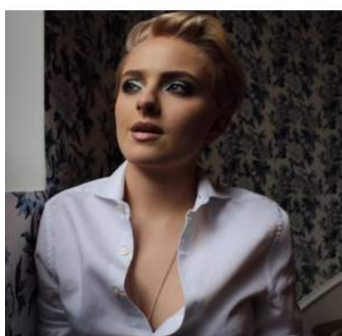
7:00PM – 8:00PM Reception.

8:00PM – 9:00PM Introductions. LGBTQ Speakers. No Stupid Questions answered.

Special Musical Performance by Owen Thiele & Bob Thiele.

9:00PM – 11:00PM Party: DJ Ivy. Dancing. Games. Connection. Raffle.

Speakers.



Madison Wiederhorn. Philanthropist. Musician. DJ. Director at Fat Brands. Maddie is active in causes that are true to her pure and generous heart. She is a radiant being and is an inspiration to our youth. We are so grateful for Maddie's involvement with ONE. <http://www.madisonwiederhorn.com/>



Beck Gee Cohen. Advocate. International Speaker. Master's level clinician with an undergraduate degree in Sociology specializing in Gender & Sexuality, and a Master's Degree in Addiction Counseling. Beck is an associate consultant at The Romeyn Collective. Beck is a force and an agent of change. Blessed. <http://www.bgcbridge.com/beck-gee>



Marc Saldivar, GLAAD Media Award recipient. Queer. Latinx. First- generation American. USC Graduate. Writer. Strategist. Facebook. Huffington Post in senior management started as Arianna's associate editor. Hillary for America Campaign content strategist. Honored and to have this soul on our platform.

"It is my belief that struggling young people are the most sensitive, creative and intelligent beings walking the planet... they just require assistance in navigating the emotions that fuel these gifts"

Lynne Pedersen, Founder



Lynne Pedersen

CADC-II, ICADC, CEO/Founder

"Oprah Winfrey said she knew she was born for greatness. She was – because she believed she was. I believe we all are.."

Lynne Pedersen (Butler) is known for her unbridled passion and fierce commitment to adolescents in need of care. She possesses an innate ability to create spaces where healing and integrity are paramount. Her unparalleled expertise in adolescent treatment has her well sought after by new and emerging programs.

Lynne set aside the building of programs to focus on the building of the first nationwide prevention and early intervention support program of its' kind.

[Click on Image to go to full bio](#)



Chelsea Reeves
Director of Culture Development



Aja Chavez
Parent Coordinator



Eli Vizsolay
Young People Coordinator



Kylie Lockington

Ambassador

Kylie is a Senior in high school and has been with ONE-ON-CAMPUS for three years. Kylie finds her own strength in ONE and shares it with anyone who needs support.

Kylie has not just been the face of ONE-ON-CAMPUS – she is truly the heart. She vows to take ONE wherever she goes. It appears it will be Paris in the Fall.

[Meet Kylie](#)

VISIONARIES, MAVERICKS AND EXPERTS IN THEIR FIELD
MEET THE BOARD



Dr. Matt Polachek

A nationally-recognized expert spokesperson on mental health and substance use disorder issues. Matt leads the Betty Ford Center's Outpatient Services.

[>> Meet Matt](#)



Bob Thiele

An American musician, composer, songwriter, producer and most notably the Award Winning Music Supervisor of the FX Series Sons of Anarchy.

[>> Meet Bob](#)



Dr. Ericha Scott

A Licensed Professional Counselor in California (LPCC917), as well as an Addictionologist with the Licensed Advanced Drug and Alcohol Counselor CADC-II/LAADC.

[>> Meet Dr. Scott](#)



Daniel Patterson

A former teacher and school administrator turned parenting coach, teen life coach, consultant and writer. His writings can be found in several national publications.

[>> Meet Daniel](#)



Dr. Don Grant

An internationally award-winning media psychologist, researcher, addiction specialist, and Chair of the American Psychological Association (Division 46) "Device Management" Committee.

[>> Meet Don](#)



Candy Finnigan

A nationally recognized addiction specialist, interventionist and author.

[>> Meet Candy](#)



Jess Lakin

A Holistic Life Coach and Kundalini Yoga and Meditation Instructor (IKYTA).

[>> Meet Jess](#)



Ann Premazon

Addiction and Behavioral health Consultant, Internet Business Consultant, PPC Wizard, Web and Social Media Strategist.

[>> Meet Ann](#)



Catia Salvadori

A true modern-day Renaissance woman. A film casting associate to Janet Hirshenson and Jane Jenkins.

[>> Meet Catia](#)



Lauren Brock

Lauren has been involved with ONE since inception.

[>> Meet Lauren](#)



Kevin Roentgen

A singer/songwriter/producer and formerly guitarist for UK Platinum, Brit Award-winning American rock band Orson.

[>> Meet Kevin](#)



ONE is an arts-infused, non-profit organization dedicated to the inspiration of young people, their loved ones and conscious members of the community looking to raise their awareness.

The ONE-Raiser.

The event raised LGBTQ* Awareness and funds for the works of ONE.



Visions Teen Treatment Centers offers a comprehensive clinically- based treatment option for teens and their families. Visions' multi-modal approach to treating complex issues relies on a team approach including family, previous treatment professionals, teachers, community experts and Visions' team of unparalleled clinicians.

From Intervention to Continuing Care We are Committed to the Family...
Committed to the Future.

CHRIS AND AMANDA SHUMOW
The Game Room Sponsor & friends of ONE

VISIONS TEEN

ONE and Visions share the same passion for fun, creativity, advocacy, and truth when treating adolescents and their families.

Visions prides itself on LGBTQIAP affirmative practice and is excited to work alongside ONE Recovery in making diversity and tolerance a global recovery concept.

www.visionsteen.com





ONE carries the simple belief that there is one recovery from all struggles
and it resides in the connection of humans.

The ONE-Raiser.

The event raised LGBTQ* Awareness and funds for the works of ONE.

We are all one.

Connection is the key. At Newport Academy, our philosophy is unconditional love. Call us today to find out more about our holistic approach to teen treatment.

"We have seen an increase in the need for education and services around the mental health needs of LGBTQ youth. At Newport Academy, we stand behind ONE's efforts to help fill a void in services for teens."

—JAMISON MONROE JR., FOUNDER & CEO



The Green Room Sponsor



The only requirement is a desire to be inspired.

The ONE-Raiser.

The event raised LGBTQ* Awareness and funds for the works of ONE.



We believe that lasting healing and growth happens best in the context of a trusting relationship with another person.

Evan Amarni

Eric Moore

MULTI CONCEPT RECOVERY
(818)433-7831

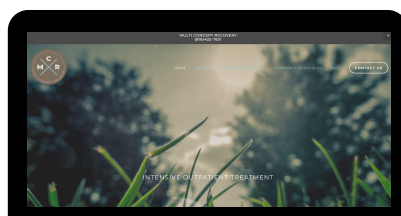
HOME

ABOUT US

TREATMENT OPTIONS

COMMUNITY RESOURCES

INTENSIVE OUTPATIENT TREATMENT



The Lounge Sponsor

ONE ON CAMPUS

EARLY INTERVENTION THROUGH
HUMAN CONNECTION™

ONE-ON-CAMPUS

The multi-dimensional support program rooted in the power of human connection.

Lunchtime Drop-In.

Students can recharge more than their phones in this safe space.

Peer-led Support Groups.

ONE trained faculty advisors follow the national ONE-On-Campus curriculum.

The Exchange.

An exclusive program of ONE. Twenty students on one campus alone are in college today as a result of their participation in this program. The purest intent and definition of Restorative Justice available on campuses today.

Email Inquire@ONEonCAMPUS.COM to find out more.

The ONE-Raiser.

The event raised LGBTQ* Awareness and funds for the works of ONE.

RESOLUTIONS

TEEN CENTER

www.resolutionsteen.com

Healthy Device Management Track

(Device / Internet / Video Gaming / Social Media / Online Platform Dependency)

Resolutions Teen Center is the only fully comprehensive intensive outpatient program in the country which offers a specialized program track specifically designed to treat Internet, video/online gaming, device, digital over-engagement, and other technologically-driven dependencies.

Created by Dr. Don Grant, (Chair of the American Psychological Association "Device Management Committee" and a globally-recognized expert in "Healthy Device Management" and the "Practice of Good Digital Citizenship"), this RTC-unique track was especially designed through evidence-based research and practicum, to help our teens break their often unhealthy attachment and dependence to devices.

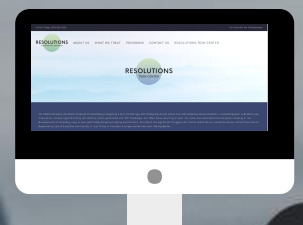
Reintroducing to our teens (or for some, maybe even demonstrating for the first time) the value and importance of face-to-face relationships, activities, family, non-digitally-based interests, and a healthy social community "IRL" ("In Real Life") is a core goal.

Once "unplugged," we provide them with individualized strategies and tools for appropriate and healthier re-engagement and sustainability post-treatment.

Thank you, Lynne Pedersen, for all you've done, all you do, all you are, and allowing us the privilege of joining the party and supporting it!

RESOLUTIONS
Don, Reza, and Maryam

#WePartyWithPride #WeGotOnTheBus
#WeBroughtTheBus#WeAreWithONE





THE COMMUNITY

Young People's Meeting.

A free weekly meeting that utilizes the lost art of conversation. We bring in Mavericks, Innovators, and Artists to share their path and passion.

Parent Meeting.

A place for parents, loved ones and conscious members of the community to simply expand and exhale.

Speakers Series.

All relevant topics are addressed by impassioned presenters who carry a message that can be heard.

The ONE Events.

ONE architects prolific experiences and events that are aimed at altering the course of lives.

Assistance Line. 888.852.2201

Nationwide assistance line for parents offering viable resources.

The ONE-Raiser.

The event raised LGBTQ* Awareness and funds for the works of ONE.

POLARIS RESIDENTIAL TREATMENT CENTERS FOR TEENS

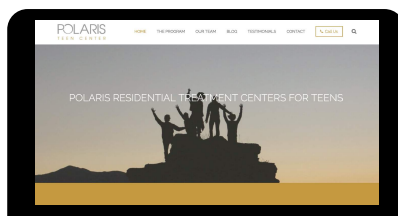
THE RIGHT HELP FOR YOUR TEEN

Addressing mental health issues in the adolescent stage can make a distinct impact in changing the trajectory of a young person's life. Polaris offers trusted treatment that has helped hundreds of teens become the best versions of themselves. Your child requires a team of dedicated, experienced experts skilled at assessment, treatment and aftercare planning.

Our state-licensed program is diligent about maintaining excellence in our standard of care, and has been nationally accredited by both the Joint Commission and the National Association of Therapeutic Schools and Programs (NATSAP).

Discover the Polaris Difference. Contact our intake & assessment team to learn about our program, schedule a tour or to verify insurance benefits.

[CONTACT OUR TEAM >](#)





We seek to ignite the passion that exists within every young person while healing the hearts and minds of their loved ones.

The ONE-Raiser.

The event raised LGBTQ* Awareness and funds for the works of ONE.

MERISTEM

Awaken the possible

MERISTEM builds the foundation for a productive life by helping to optimize the potential of each individual.

Through the three-year residential and day program, **MERISTEM** serves young adults with Autism Spectrum Disorder and related Learning Differences by helping them develop practical life skills, increase social capacity, and transition to college, work and independence.

MERISTEM's flagship center is located on a beautiful 13-acre campus near the American River in Sacramento.

We would love for everyone to visit and learn more about the incredible work we do. For more information please visit www.meristem.pro or call 916 661 0046

SOCIAL ENTERPRISE



CRAFT WORK



Contact Anya Perea at 916 963 1000 or 310 633 0040

meristem.pro info@meristem.pro 9200 Fair Oaks Boulevard, Fair Oaks, California 95628

MERISTEM





KEY MENTORING

Individualized mentoring and life skills programs.

Los Angeles & Colorado

[READ MORE](#)



KEY HOUSING

Adolescent Structured Housing providing academic and emotional support.

Los Angeles

[READ MORE](#)

KEY TRANSITIONS

BUILDING INDEPENDENCE THROUGH PURPOSE AND COMMUNITY

[CALL 800-421-4364](tel:800-421-4364)

KEY TRANSITIONS IS AN INDIVIDUALIZED, ADOLESCENT AND YOUNG ADULT TRANSITION-FOCUSED COMPANY. OUR PROGRAMS, KEY MENTORING AND KEY HOUSING, ARE DESIGNED FOR THE INDIVIDUAL WHO STRUGGLES WITH BEHAVIORAL, MENTAL HEALTH, AND SUBSTANCE USE ISSUES.



THE ART OF PARENTING

WORKSHOP SERIES

Marcela and Rebekah are the creators of The Art of Parenting workshop series. This series supports adolescent treatment settings in reaching and teaching parents. We know that successful recovery treats everyone in family life, most importantly, parents. The Art of Parenting educates parents on the teen brain, effective relationship tools, self-care, and how to create a loving atmosphere at home. We would love to bring our workshop to your program.



Marcela Rondani, LMFT
WWW.MARCELARONDANI.COM



Rebekah Tayebi, MSW
WWW.SATYAFAMILYCOACHING.COM

Marcela Rondani is a trilingual Licensed Marriage and Family Therapist and holds a Master's Degree in Clinical Psychology and she is currently pursuing her Doctoral degree in Clinical Psychology, with her dissertation focusing on family therapy with teenagers. Marcela owns and directs a clinical, transitional, and coaching services that provides psychological support for parents, teens and young adults, as well as clinical education to schools, universities and treatment centers. Marcela has worked more than twelve years with adolescents and parents in treatment centers settings, as a clinician, supervisor and director. Marcela has intense training working with trauma, mental health, and eating disorders. She has been trained by Pia Mellody, and she has been part of the IAEDP board since 2014.

Rebekah Tayebi is the founder of Satya Family Coaching, an in-home service that provides therapeutic support to teens, young adults, and their parents. She earned her MSW from Columbia, specializing in clinical work with children and families. She is a Yoga Alliance Certified ERYT500, and has co-founded Yoga for Trauma Recovery, integrating yoga, mindfulness, and western therapeutics into the healing process. Rebekah has served on the board of director's for Sky's the Limit Fund and helped create their national aftercare coaching program. She has been working with teens and their families for thirteen years, specializing in trauma, addiction issues, and family dynamics. Rebekah feels honored to witness the healing and empowerment of those in recovery.

THE NEED FOR STUDENTS TO HAVE
SUPPORT ON CAMPUS SEEMS TOO DAUNTING
FOR A NATIONWIDE SOLUTION.
IT IS NOT.
WE HAVE ONE.

ONE
ONE-ON-CAMPUS
GET ONE ON YOUR CAMPUS TODAY



www.ONEONCAMPUS.COM
888.852.2201 INQUIRE@ONEONCAMPUS.COM

The ONE-Raiser.

The event raised LGBTQ* Awareness and funds for the works of ONE.



Daniel
Patterson

The **ASSERTIVE** PARENT

Hacks, Traps
& Strategies
for Raising
Authentic Teens

ADVOCATE, MENTOR, COACH
Daniel Patterson

BOARD MEMBER. AUTHOR. EDUCATOR.
PARENT-TEEN COACH. ADMINISTRATOR.
SPEAKER. BFF OF ONE.





INSPIRATION IS THE NEW MEDICATION

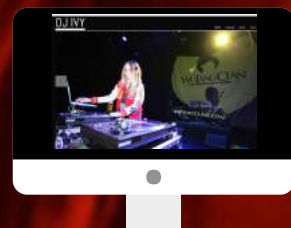
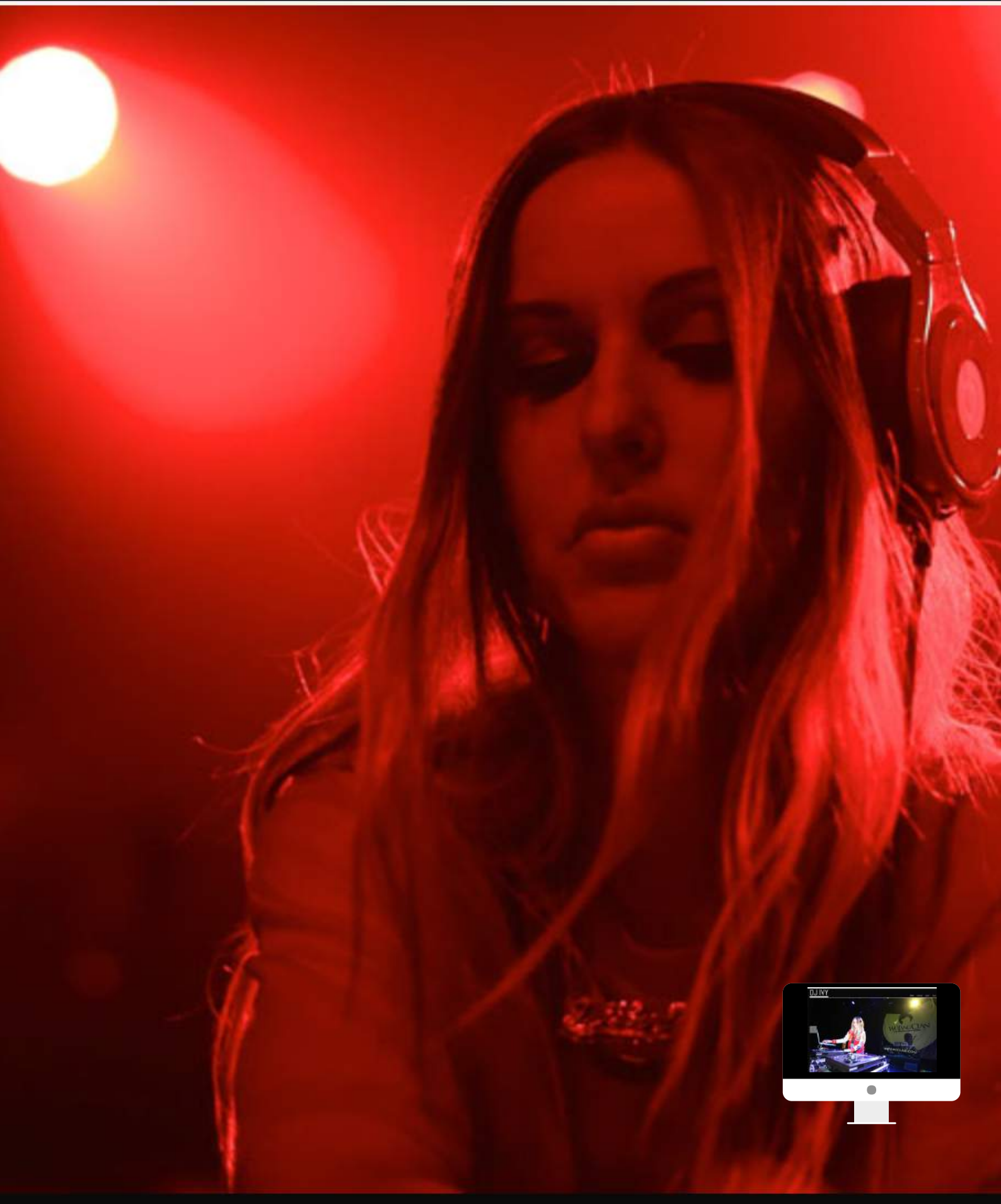
The ONE-Raiser.

The event raised LGBTQ* Awareness and funds for the works of ONE.

ONE ON CAMPUS

EARLY INTERVENTION THROUGH
HUMAN CONNECTION™

DJ IVY





EARLY INTERVENTION THROUGH HUMAN CONNECTION

The ONE-Raiser.

The event raised LGBTQ* Awareness and funds for the works of ONE.

SAILOR
EVE
FILMS





EARLY INTERVENTION THROUGH
HUMAN CONNECTION™

CONSCIOUS CONTRIBUTOR

BEcome ONE.

The ONE-Raiser.

The event raised LGBTQ* Awareness and funds for the works of ONE.



THE TIME
IS ALWAYS RIGHT
TO DO
WHAT IS RIGHT.

Martin Luther King Jr.



The ONE-Raiser.

The event raised LGBTQ* Awareness and funds for the works of ONE.



Together, We Are One

As our GT's family continues to grow, we are deeply humbled and sincerely grateful for every moment of this journey with you.



THE GT'S GIRLS



The ONE-Raiser.

The event raised LGBTQ* Awareness and funds for the works of ONE.



THE FIVE STRIPE HOODIE

SHOP IT

1 of 2



Big Sugar
BAKESHOP



MOONWOOD COFFEE CO.



the **FUNKY** brewster
caffeinating the world one FUNKY cup of coffee at a time.

THE NEED FOR STUDENTS TO HAVE
SUPPORT ON CAMPUS SEEMS TOO DAUNTING
FOR A NATIONWIDE SOLUTION.

IT IS NOT.
WE HAVE ONE.

ONE
ONE-ON-CAMPUS
GET ONE ON YOUR CAMPUS TODAY



www.ONEONCAMPUS.COM
888.852.2201 INQUIRE@ONEONCAMPUS.COM



FEATURED BREWS



BLACK & BOLD



DOUBLE ESPRESSO



CREAMY CAPPUCCINO +PROTEIN

ON THE ROAD?

[Click here and let us keep your crew moving!](#)



NEED A BOOST AT THE OFFICE?

[Click here to request a sampling.](#)



#FORTHOSEWHODO

Party with Pride. A ONE-Raiser. Raise LGBTQ* Awareness while raising funds for the works of ONE.

JUNE 8TH | 7PM-11PM DTLA

ONE RECOVERY PARTY WITH PRIDE

ART. MUSIC. POOL TABLE. PING PONG. TREATS. SPEAKERS. DJ. DANCING.
WITH A "NO STUPID QUESTION BOX"

A ONE-Raiser: Raising LGBTQ+ Awareness & Funds for ONE



Beck Gee
Cohen



MARC Saldivar
GLAAD Award
Recipient



Madison
Wiederhorn

THANK YOU TO OUR GENEROUS SPONSORS AND SUPPORTERS



KEYTRANSITIONS



TICKETS AT WWW.1RECOVERY.COM/PRIDE 501(C)3 NONPROFIT

FROM ONE TO YOU

THANK YOU

SPECIAL THANKS TO JILL & JOHN MANLY
FOR THE 2017-2018 SUPPORT

WWW.1RECOVERY.COM
PLEASE THINK OF US IN YOUR CORPORATE OR PRIVATE GIVING
ONE RECOVERY 501(C)3
2018

